



**Kennedy**  
Baptist College

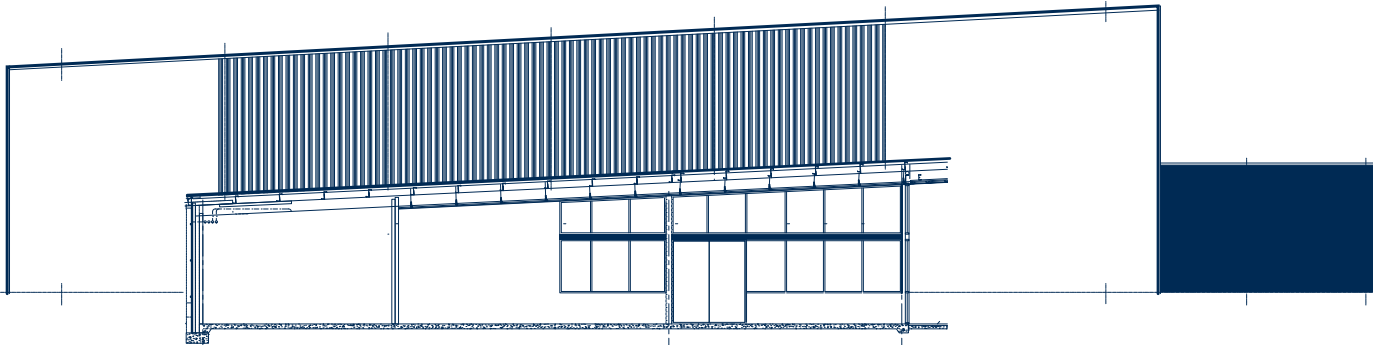


**ANNUAL REPORT 2016**



# CONTENTS PAGE

- CHAIRMAN’S COMMENTS \_\_\_\_\_ PAGE 2
- PRINCIPAL’S COMMENTS \_\_\_\_\_ PAGE 3, 4
- ABOUT OUR COLLEGE \_\_\_\_\_ PAGE 5
- OUR COLLEGE COMMUNITY \_\_\_\_\_ PAGE 6
- NATIONAL REPORTING REQUIREMENTS \_\_\_\_\_ PAGE 8
  - 1. PROFESSIONAL ENGAGEMENT \_\_\_\_\_ PAGE 8
  - 2. KEY STUDENT OUTCOMES \_\_\_\_\_ PAGE 9
  - 3. INCOME AND EXPENDITURE \_\_\_\_\_ PAGE 11
- PARENT, STUDENT AND TEACHER SATISFACTION \_\_\_\_\_ PAGE 12, 13



## CHAIRMAN'S COMMENTS

The Kennedy Baptist College Board has the privilege of serving students, their families and staff. The Board's role is to provide good governance to the College to ensure that the students are able to fulfil their God given potential: culturally, socially, spiritually and academically, and progress from their school life to make a significant contribution to the world in which they live. This is why the College motto of "Strive Today, Conquer Tomorrow" is so important.

The Board meets regularly to provide clear strategic direction and objectives in order to provide an excellent Christian based education, responsible financial management, and effective risk and compliance management. The Board continually monitors these in cooperation with the Principal and Executive staff.

I have had the privilege of serving as Chairman of the Board since July 2016, having succeeded Cameron Bulstrode. The Board and College community pay tribute to Cameron for his unswerving commitment to the College's mission and ministry. Cameron has now retired from the Board but still maintains a strong interest in the College. Greg Holland has also stepped down after providing significant experience, expertise and service as Treasurer of the Board. We have welcomed Luke Mason as the new Treasurer and Phil Ridden has returned to the Board after a brief absence.

This year has seen the continued improvement of the College facilities with further development of a number of Learning Areas. The new Kennedy Sports Centre will be operational in Term 1, 2017. This wonderful addition to the College will enable our mission and vision to be enhanced.

While the WACE results for 2016 have improved from previous years, even more significant are the stories behind the results, which are a tribute to both the students' commitment to their studies, and the staff's provision of academic and pastoral assistance and encouragement.

Finally, I would like to thank God, parents, staff and students for another successful year.

**Philip Bryant,**

Chair of the College Board

Board members: Anina Findling (Secretary), Luke Mason (Treasurer), Stephen Anson, Dean Oates, Phil Ridden, Joseph Tan and Nina Tassell.



## PRINCIPAL'S COMMENTS



Kennedy Baptist College, is a vibrant, innovative and multi-faceted learning community, which has a rich and distinctive culture where the lives of students are transformed through education. 2016 has seen students at Kennedy engaged, enriched and empowered through learning. The College values have certainly been embraced by students in their learning, both in and beyond the classroom, in their relationships, and in the manner in which they have helped others who are less fortunate than themselves. In the same way, members of the Kennedy Baptist College staff, who are highly professional and renowned among the educational community, have ensured that the College continues its journey of self-improvement and best educational practice.

Throughout the year, our positive 'culture of learning' has pervaded in the College. The College strategic plan has provided an excellent framework for the implementation of the W.A. and Australian curriculum in a manner that provides greater depth and breadth. This means our students have been given the opportunity to learn richly and deeply and perform at a high level. The understanding and insight demonstrated by students' questions, their ability to think creatively and critically and the quality of their work, has been most impressive.

This is certainly reflected in our very pleasing Year 12 WACE results which keep improving each year. Through an emphasis on being academically rigorous and engaging, as well as encouraging each student to give of and achieve their personal best, 34% of our students completing the WACE examinations attained an ATAR of 90 or above and 100% of students completing a General course attained a Certificate II qualification or higher.

To enhance our student Pastoral Care program, protective behaviour education has continued to be embedded across the College. Kennedy has always had a positive culture and this has been enriched by taking into account extensive research in this field. A particular whole school focus for this year has been the implementation of the "Nourishment Programs". These programs are embedded in our daily curriculum to provide extra support for our students. These include Year 7 transition programs (Thrive and SMARTS), Year 9 gender-based programs (Shine and Strength), Year 11 study skills programs (Strive and Conquer) and the Staff/Student Mentoring program in Year 12. They have been designed to encourage students to take risks, move outside their 'comfort zones' and aspire to higher levels of knowledge, understanding and competence.

Continued over...

I would like to thank the members of the Kennedy Baptist College Board for their hard work, support and wisdom. These men and women generously volunteer their time to ensure that Kennedy is governed well. They also provide support, knowledge and prayer, which is appreciated very much. I would particularly like to take this opportunity to pay special tribute to our Chair of Board, Mr Cameron Bulstrode who retired as Chair from the Board during 2016. Mr Bulstrode has been determined in his support of the College, and his hard work, dedication, wise counsel, prayer and leadership have been greatly appreciated.

The history of Kennedy Baptist College is a wonderful tapestry of change and continuity. The continuity is Kennedy's unique and distinctive culture: Grounded in the Christian faith, Kennedy has been, and always will be, a school where every student is well-known and inherently valued; it is a school that has an extremely positive culture, and it is a school where every student is encouraged to embrace all opportunities, to shine and to do their personal best in all. This is the constant. Within this continuity, there has also been a willingness to embrace change and to ensure that learning at Kennedy College is 'at the cutting edge'. As Dewey said so many years ago: "If we teach today's students as we taught yesterday's, we rob them of tomorrow." Kennedy College has never robbed its students of tomorrow. It continues to be a great privilege to be entrusted to lead the students of Kennedy on their learning journey, a journey that is lifelong and something to be treasured.



**Mark Ashby**

Principal

# ABOUT OUR COLLEGE

## KENNEDY MISSION STATEMENT

*"To provide educational opportunities of excellence in a Christian context, addressing the needs of individuals for lifelong learning."*

### BACKGROUND

In 2011 the Boards of Somerville Baptist College and Winthrop Baptist College announced a future change to the Colleges' structure in the form of a merger, forming the new Kennedy Baptist College. Additional curriculum scope, expanded facilities and increased opportunities presented the Colleges' communities with an exciting new phase of development. Named after William Kennedy, the Colleges worked throughout 2012 preparing for the commencement of Kennedy Baptist College in January 2013.

The College motto is "Strive today, Conquer tomorrow".

In 2016 the College catered for students from Year 7 to Year 12 with a total College population of 1150 students.

### COLLEGE VALUES

Kennedy Baptist College upholds core values which form the framework of our pastoral care, discipline and learning programs. The values are:

• Faith • Integrity • Boldness • Growth • Service

Students, staff and parents are expected to reflect these values in every aspect of their involvement with the College.

### LOCATION

Kennedy Baptist College was opened in 2013 and is located in the suburb of Murdoch, which is approximately 13 kms south of Perth.

### COLLEGE FACILITIES

Kennedy Baptist College has developed facilities based around learning area cluster class buildings. These clusters consist of:

- Science
- Food Technology
- Design and Technology
- Mathematics
- Humanities
- Technology
- English and LOTE
- Arts Centre including a 1200 seat auditorium.

2016 saw the ongoing development of College resources, including the new Sports Centre. These developments provide our staff and students with wonderful resources to maximize learning opportunities.



# OUR COLLEGE COMMUNITY

## OUR COLLEGE COMMUNITY

There are over 50 primary schools which contribute to the intake of students to the College. This includes students from the local government authorities of Cities of Melville, Cockburn and Fremantle.

As part of the induction to the College, our incoming Year 7 and 8 students and families participated in a number of activities designed to make their transition to high school smooth and for the new students to gain a sense of pride in and ownership of their College.

In the year prior to entry, a student's engagement included:

- Years 7 Orientation Day
- Years 8-12 New Student Orientation
- Open Day
- Year 7 Pre-Start Day

Upon their commencement students were involved in:

- First Day Induction: Commencement Ceremony
- Activities with pastoral care staff
- College Mentoring Program where Year 11 volunteers train to be 'big brothers' or 'big sisters' to new students
- Lunch time activities
- A 'Life Skills' course which encompasses key skills necessary for senior school studies and social development

Parents were involved in:

- Year 7 Family Information Evening where parents met their child's friends and their families, and key staff
- Year 7 Meet the Teachers Evening
- Parents & Friends Meetings and social events
- Parent-Teacher Interviews during Term 1
- Parent web portal SEQTA provides families with direct access to student results and feedback
- Mother/Father's Day Functions

The College Parents & Friends Association is run by a small but efficient and enthusiastic group of parents.

The Parents & Friends Association has four executive officers involved in the College planning and fund raising. Feedback is actively sought by the College Administration through the P&F on school matters.

In addition, parent and College interaction is further enhanced through:

- Fortnightly newsletters
- Assemblies
- Open Day
- Parent/student activities
- Award nights
- Parent seminars
- Easter services
- The College website
- The College mobile App



# OUR COLLEGE COMMUNITY

## OPPORTUNITIES FOR STUDENTS AT KENNEDY BAPTIST COLLEGE

Our students have had the opportunity to participate in a wide range of programs that add value to their educational experiences including:

### Academic Specialist Programs and Activities

- LOTE (Indonesian / French)
- Science enrichment
- National academic competitions
- Sports clubs
- National and International study tours
- Curriculum excursions
- Tutoring program
- Specialist Basketball and Cricket programs
- National and International mission opportunities.

### Academic Extension

The streaming of classes for Mathematics, Science and SOSE provided the opportunity for extension activities to address the needs of individuals in each of these learning areas.

Kennedy Extension and Enrichment Program (KEEP) has once again provided an environment where academically able students can be challenged and extended to attain the highest levels of excellence alongside peers who share similar aspirations, abilities and interests. The students in KEEP have been taught by teachers with expert skills and knowledge for this particular program. Students covered the core curriculum, but have also been engaged in extension and enrichment activities.

### The Arts

- College choir
- College ensemble
- College productions
- Arts events.

### Pastoral Care

- Year managers
- College Chaplain
- Year 7 transition program
- 11/7 mentor program
- College Psychologist
- College Counsellor
- College assemblies
- Social and emotional learning program
- Year camps

### Sporting Opportunities

- Interschool Athletics
- Interschool Cross Country
- Lightning Carnivals
- Interschool Swimming
- Champion Schools sports
- Athletics / Swimming carnivals.
- Southern Association Sports competition (SAS)

#### 2016 SAS Overall Placing

All Saints' College	Carey Baptist College	Kennedy Baptist College
1st	2nd	3rd

#### 2016 SAS Junior Overall Placing

Corpus Christi College	Kennedy Baptist College	St Norbert College
1st	2nd	3rd

# NATIONAL REPORTING REQUIREMENTS

## 1. PROFESSIONAL ENGAGEMENT

### TEACHING EXPERIENCE

The College's teaching staff come from diverse teaching backgrounds and bring a wealth of experiences to enhance the students' learning programs. A wide range of expertise enables the provision of challenging programs across the eight learning areas. The majority of teachers have been involved in education for ten years or more.

The staff at Kennedy are committed to educational excellence. They have a strong commitment to their on-going professional development.

### SCHOOL SUPPORT STAFF

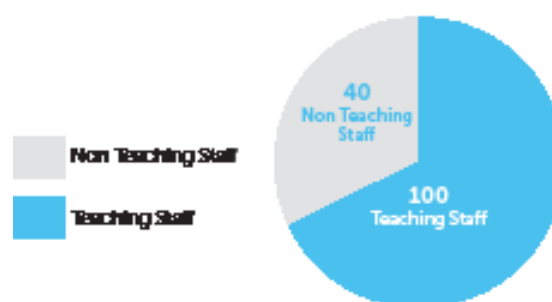
The College has a wide range of support staff. Their roles include finance, enrolments, student support services, administration, maintenance and learning assistance. The College staff works as a team and all are valued contributors to the effective operation of the College.

### STAFF ATTENDANCE

Teaching Staff	96.60%
School Support Staff	97.40%
All School Staff	96.84%

### STAFF QUALIFICATIONS

Staff with Masters Degree: 7  
 Number of Lead Teachers: 0



Staff Retention Rate: 91.78%

### TEACHER PROFESSIONAL LEARNING

All teaching staff have engaged in a minimum of 5 days of professional learning. In 2016 some examples of learning included:

- Complispace
- Creating Self-Directed Learning Students
- Developing a Growth Mindset Classroom
- Head of Year Planning Day
- Kennedy Extension and Enrichment Program Planning Day
- Kennedy Leadership Excellence Program
- Mandatory Reporting (Mick ten Haaf - AISWA)
- Reregistration with TRBWA
- Risk Management and Complispace
- Student Inclusivity and Wellbeing
- Suicide Prevention and Postvention (Head Space)
- Various Staff Induction Programs

Teacher expenditure for staff professional learning amounted to:

Average per staff member	\$665
Total expenditure	\$97,108
(all staff and programs)	

# NATIONAL REPORTING REQUIREMENTS

## 2. KEY STUDENT OUTCOMES

### 2016 STUDENT ATTENDANCE RATES



### CERTIFICATES OF ACHIEVEMENT

Awards for school based achievement.

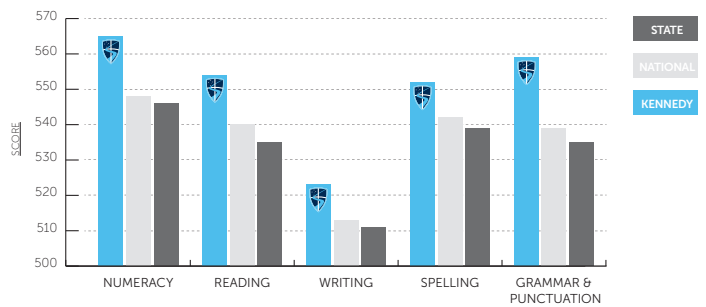
Year 7	> 10 "A" grades	32
Year 8	> 8 "A" grades	12
Year 9	> 8 "A" grades	16
Year 10	> 8 "A" grades	7
Year 11	> 4 "A" grades	18
Year 12	> 4 "A" grades	11



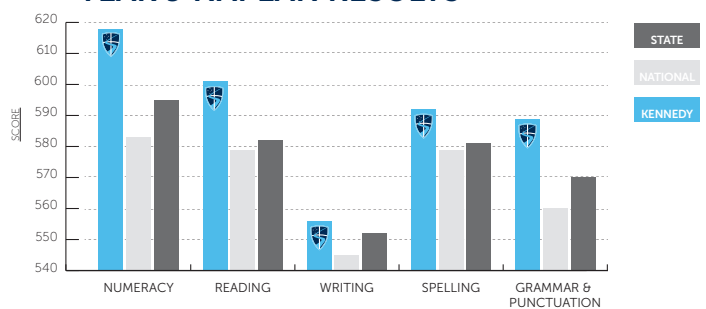
### MONITORING STANDARDS IN EDUCATION

Average scores for the national literacy and numeracy tests (NAPLAN):

#### YEAR 7 NAPLAN RESULTS



#### YEAR 9 NAPLAN RESULTS



## YEAR 12 ATAR RESULTS

The following snapshot outlines the accomplishment of our Class of 2016:

- **Top performing subject achievement:**
  - Chemistry
  - Business Management
  - Literature
- **Students offered University positions:**
  - 1st preference: 73%
  - Total preference: 90%

The following data illustrates the performance of the 194 students with an Australian Tertiary Admission Rank who applied for university entrance.

ATAR Achieved	Frequency%
95.00+	14.9
94.9 - 90.0	10.4
89.9 - 85.0	14.9
84.9 - 80.0	14.2
79.9 - 75.0	11.2
74.9 - 70.0	14.2
69.9 - 65.0	3
64.9 - 60.0	8.2
59.9 - 55.0	1.5
< 55.0	7.5

The highest ATAR achieved was

**99.6**

The State median ATAR was 80.85

The College median ATAR was 82.25

The following students were recipients of the Curriculum Council's Secondary Education Exhibitions and Awards, which highlight outstanding academic achievement.

### Certificate of Excellence

- **Abbey Scanlon - Business Management and Enterprise**
- **Primin Cowell - Engineering Studies**
- **Brooke Moro - Mathematics Applications**

### Certificate of Merit

- **23 Students**

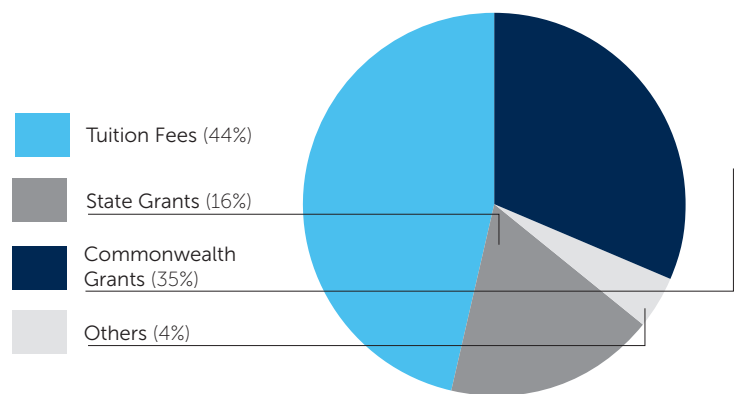
### Certificate of Distinction

- **11 Students**

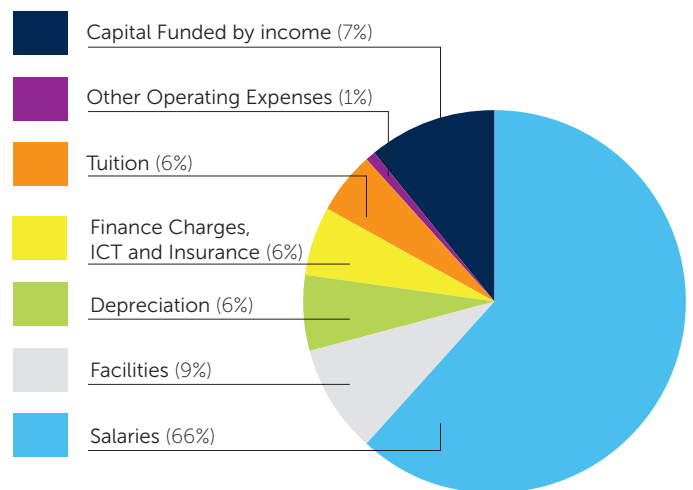
Along with 69 Year 12 Students completing Vocational Certificates.

## 3. INCOME AND EXPENDITURE

Income	\$
Tuition Fees	9,430,972 .00
State Grants	3,471,103 .00
Commonwealth Grants	7,556,764 .00
Others	854,852 .00
<b>Total</b>	<b>21,313,691 .00</b>



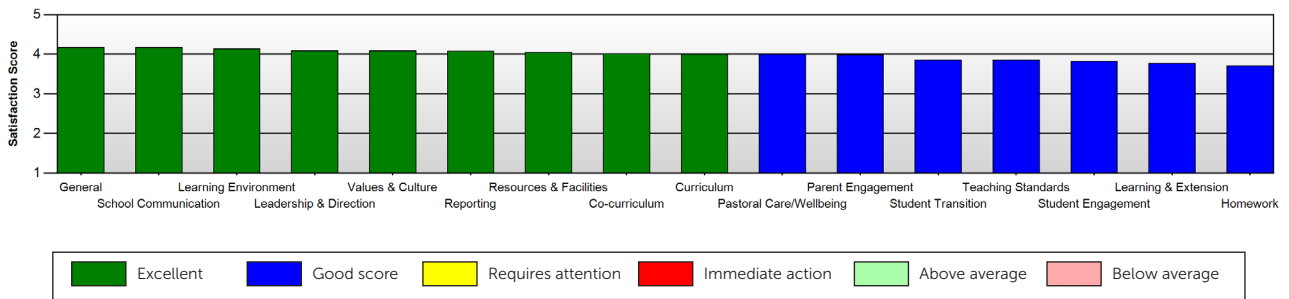
Expenditure	\$
Capital Funded by income	1,471,186 .00
Other operating expenses	259,822 .00
Tuition	1,208,107 .00
Finance Charges, ICT and Insurance	1,228,440 .00
Depreciation	1,179,468 .00
Facilities	1,962,059 .00
Salaries	14,004,608 .00
<b>Total</b>	<b>21,313,691 .00</b>



# PARENT, STUDENT AND TEACHER SATISFACTION

## SUMMARY RESPONSES FROM PARENTS

This report section provides a summary of the total responses grouped by key area. Results are ranked from highest to lowest and compared to the average overall scores.

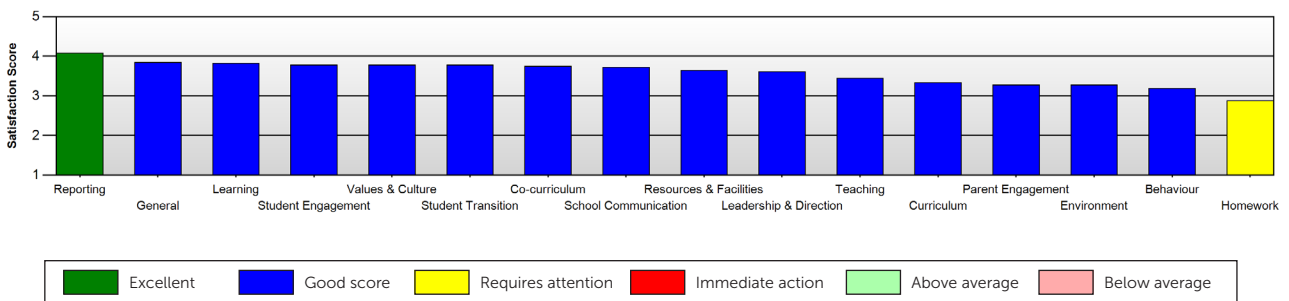


### What do you like about Kennedy Baptist College?

The leadership team are outstanding at setting the standards and applying the rules and values of the college. I also appreciate the broad based approach to the curriculum that encourages students to learn across areas such as arts, music, sports, technical crafts in addition to the core subjects and explore their potentials.

## SUMMARY RESPONSES FROM STUDENTS

This report section provides a summary of the total responses grouped by key area. Results are ranked from highest to lowest and compared to the average overall scores.



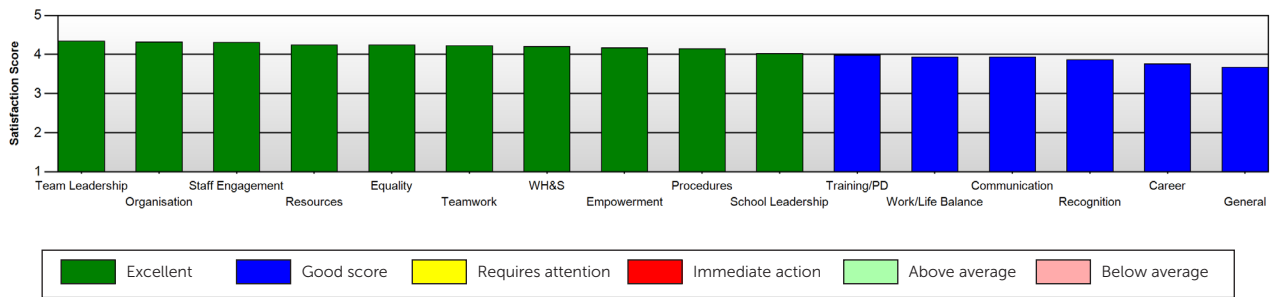
### What do you like about Kennedy Baptist College?

What I most like about Kennedy Baptist College, is all the opportunities that we get towards everything, e.g. outside of school activities, lunch time and recess activities and lots of opportunities through out the time i am at Kennedy, to go on school trips to different countries.



## SUMMARY RESPONSES FROM STAFF

This report section provides a summary of the total responses grouped by key area. Results are ranked from highest to lowest and compared to the average overall scores.



### What do you like about Kennedy Baptist College?

Kennedy Baptist College provides a professional and positive working environment. The College encourages me and supports me to challenge the existing and work towards improvements in all areas. The College keeps the students as their primary focus.



Farrington Road, Murdoch, Western Australia 6150 | PO Box 26, Bull Creek, Western Australia 6149 | CRICOS Code: 01688K  
t: (+618) 9314 7722 | f: (+618) 9314 7732 | e: [admin@kennedy.wa.edu.au](mailto:admin@kennedy.wa.edu.au) | [kennedy.wa.edu.au](http://kennedy.wa.edu.au) | ABN: 21 207 516794

**Strive today, conquer tomorrow**