



ANNUAL REPORT 2013

Strive today,
conquer
tomorrow



2013

CHAIRMAN'S COMMENTS

Mr Cameron Bulstrode
Chair of the Board



The College has much to celebrate at the end of 2013, the first year of Kennedy Baptist College. Early in the year, the Principal, Mark Ashby, and staff, students and parents in the College community were commissioned. The College was officially opened by the Minister for Education, along with the new Research and Study Centre and Administration block. Since then the Student Services building has been renovated and many classrooms have been renovated and the campus opened up.

The Board has approved a site Masterplan which includes the bringing together of specialist facilities within the College,

The new College has undergone a rigorous registration process, and the reviewers were full of praise for what has been achieved.

All members of the College community have contributed to the achievements of the College this year. The Board commends students and parents in their support for the College, and their enthusiasm in creating a community from two communities. We also commend the Principal and staff for their work in creating the culture of the College and for creating and implementing policies, procedures and practices.

The members of the College Board work to ensure the success and sustainability of the College. They are listed below and I thank them for the valuable contributions they have made:

We continue to thank God for His leading of our College.

Cameron Bulstrode,
Chair of the College Board

Board members: Phil Ridden, Joseph Tan, Ross Hughes, Philip Bryant, Heather Gare, Nina Tassell, Dean Oates, Anina Findling.



PRINCIPAL'S COMMENTS

Mr Mark Ashby
Principal



Welcome to the inaugural Kennedy Baptist College Annual Report. It is with great pride that we present a snap shot of the opportunities provided by the College throughout the year. This first year has provided the chance for the College to reflect upon its practices and respond in its organisational search for excellence. The opening of the Research and Study Centre in Term 3 was certainly a highlight, contributing to the high quality facilities the College has developed for all students.

Kennedy Baptist College's mission is to ensure that every student becomes the best they can be. Stories of individual challenge, persistence and achievement are testimony to the philosophy of Kennedy Baptist College. These stories are evident in individual academic results and workplace learning results, at every music concert, art exhibition, drama production, sports day, arts festival event and much more. They are the results of a school that provides the opportunity for each student to strive for personal excellence. Some of the major characteristics that contribute to our mission of academic excellence are highlighted in this report.



ABOUT OUR COLLEGE

Mission Statement :

“ To provide educational opportunities of excellence in a Christian context, addressing the needs of individuals for lifelong learning. ”



BACKGROUND

In 2011 the Boards of Somerville Baptist College and Winthrop Baptist College announced a future change to the College’s structure in the form of a merger, forming the new Kennedy Baptist College. Additional curriculum scope, expanded facilities and increased opportunities presented the College’s community with an exciting new phase of development. Named after William Kennedy, the colleges worked throughout 2012 in preparation for the commencement of Kennedy Baptist College in January 2013. The College motto is “Strive today, Conquer tomorrow”.

In 2013 the College catered for students from Year 7 to Year 12 with a total College population of 1220 students.

COLLEGE VALUES

Kennedy Baptist College upholds core values which form the framework of our pastoral care, discipline and learning programs. The values are:

- Faith • Integrity • Boldness • Growth • Service

Students, staff and parents are expected to reflect these values in every aspect of their involvement with the College.

LOCATION

Kennedy Baptist College was opened in 2013 and is located in the suburb of Murdoch, which is approximately 13 kms south of Perth.

COLLEGE FACILITIES

Kennedy Baptist College has developed facilities based around learning area cluster class buildings that are extremely well presented given that the school is over 20 years old. These clusters consist of:

- Science
- Food Technology
- Design and Technology
- Mathematics
- Humanities
- Technology
- English and LOTE
- Arts Centre including a 1200 seat auditorium

The commencement of 2013 saw the completion of Stages 1 and 2 of the building masterplan. This included the following facilities:

- A new Administration building
- A new Research and Study Centre
- The refurbishment of many classrooms on the northern wing of the campus.



OUR COLLEGE COMMUNITY

OUR COLLEGE COMMUNITY

There are over 50 primary schools which contribute to the intake of students to the College. This includes students from the local council cities of Melville, Cockburn and Fremantle.

As part of the induction to the College, our Years 7 and 8 students and families participated in a number of activities designed to make their transition to senior school a smooth one and for the new students to gain a sense of pride in and ownership of their College.

In the year prior to entry, a student's activities included:

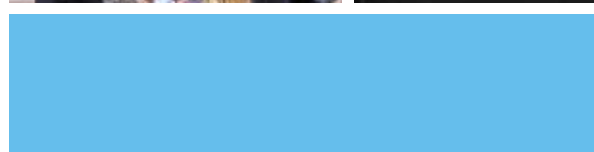
- Years 7 and 8 Orientation Day
- Years 9-12 New Student Orientation
- Open Day
- Years 7 and 8 Pre-Start Day.

Upon their commencement students were involved in:

- First Day Induction: Commencement Ceremony
- Activities with Youth Workers and staff
- College Mentoring Program where Years 11 and 12 volunteers train to be 'big brothers' or 'big sisters' to new students
- Lunch time activities
- A 'Life Skills' course which encompasses key skills necessary for senior school studies and social development.

Parents were involved in

- Years 7 and 8 Family Information Evening where parents met their child's friends and their families, and key staff
- Meet the Teachers Evening
- Parents and Friends Meeting
- Parent-Teacher interviews during Term 1.



The College Parents & Friends Association is run by a small but efficient and enthusiastic group of parents. The Parents & Friends Association has four executive officers involved in the College planning and fund raising. Feedback is actively sought by the College Administration through the P&F on school matters.

In addition, parent and school interaction is further enhanced through:

- Fortnightly newsletters
- Assemblies
- Parent information evenings
- Parent morning and afternoon teas
- Open Day
- Parent/student activities
- Prize nights
- Parent seminars
- College Sunday Easter service
- The College website

OPPORTUNITIES FOR STUDENTS AT KENNEDY BAPTIST COLLEGE

Our students have had the opportunity to participate in a wide range of programs that add value to their educational experiences including:

Academic Specialist Programs and Activities

- LOTE (Indonesian / French)
- Science enrichment
- National academic competitions
- Sports clubs
- National and International study tours
- Curriculum excursions
- Tutoring program
- Specialist Basketball and Cricket programs
- International mission opportunities.

Academic Extension

The streaming of classes for Mathematics, Science and SOSE provided the opportunity for extension activities to address the needs of individuals in each of these learning areas.

The Arts

- College choir
- College ensemble
- College productions
- Arts events.

Pastoral Care

- Year managers
- College Chaplain
- 7/8 transition program
- 11/8 mentor program
- College Psychologist
- College Counsellor
- College assemblies
- Social and emotional learning program
- Year camps.

Sporting Opportunities

- Interschool Athletics
- Interschool Cross Country
- Lightning Carnivals
- Southern Association Sports competition
- Interschool swimming
- Champion Schools sports
- Athletics / Swimming carnivals.



NATIONAL REPORTING REQUIREMENTS

1. PROFESSIONAL ENGAGEMENT

TEACHING EXPERIENCE

The College's teaching staff come from diverse teaching backgrounds and bring a wealth of experiences to enhance the students' learning programs. A wide range of expertise enables the provision of challenging programs across the eight learning areas. The majority of teachers have been involved in education for ten years or more.

The staff at Kennedy are committed to educational excellence. They have a strong commitment to their on-going professional development.

SCHOOL SUPPORT STAFF

The College has a wide range of support staff. Their roles include finances, enrolment, student support services, administration, maintenance and learning assistance. The College staff works as a team and all are valued contributors to the effective operation of the College.

2013 STAFF ATTENDANCE

Teaching Staff	97.8%
School Support Staff	98.3%
All School Staff	98.0%

2013 STAFF QUALIFICATIONS

Staff with Masters Degree: 6

Number of Lead Teachers: 0

Workforce Composition

Teaching Staff	101
Non-Teaching Staff	36
<hr/> Total	<hr/> 137

Staff Retention

Staff Retention Rate 96%

TEACHER PROFESSIONAL LEARNING

All teaching staff have engaged in a minimum of 5 days of professional learning per year. In 2013 some examples of the whole teaching staff professional learning included:

- Curriculum improvement
- Performance management
- Behaviour management and discipline
- Reporting to parents
- Learning with Information and Communications Technology
- Inclusive education processes
- Class structure & planning
- School financial processes
- School planning
- School review – outcomes
- Principles of teaching & learning
- Curriculum assessment & reporting
- Duty of care.

Teacher expenditure for staff professional learning amounted to:

Number of teaching staff:	101
Average per staff member	\$350
Total expenditure (all staff and programs)	\$35,350

2. KEY STUDENT OUTCOMES

2013 Student Attendance Rates

Kennedy	94.0%
State (D.O.E)	88.0%

CERTIFICATES OF ACHIEVEMENT

Awards for school based achievement.

Year 7	> 10 "A" grades	9
Year 8	> 10 "A" grades	19
Year 9	> 8 "A" grades	14
Year 10	> 8 "A" grades	8
Year 11	> 6 "A" grades	5

MONITORING STANDARDS IN EDUCATION

Average scores for the national literacy and numeracy tests (NAPLAN):

Year 7		
	Kennedy	National
Reading	550	540
Writing	520	517
Spelling	556	549
Grammar	547	535
Numeracy	555	542

Year 9		
	Kennedy	National
Reading	595	580
Writing	558	551
Spelling	585	583
Grammar	587	573
Numeracy	602	584

2013 YEAR 12 ATAR RESULTS

The following snapshot outlines the accomplishment of our Class of 2013:

- Kennedy Baptist College top in Biology 3A/B in the state.
- Students offered University position:
 - 1st preference: 64.4%
 - Total preference: 87%

The following data also illustrate the performance of the 205 students with an Australian Tertiary Admission Rank who applied for university entrance.

ATAR Achieved	Frequency%
95.00+	7.1
94.9 - 90.0	14.7
89.9 - 85.0	11.5
84.9 - 80.0	17.9
79.9 - 75.0	10.4
74.9 - 70.0	8.3
69.9 - 65.0	3.2
64.9 - 60.0	6.4
59.9 - 55.0	5.8
< 55.0	14.7

The highest ATAR achieved was 99.4.

The state median ATAR was 79.1 and Kennedy Baptist College median was 80.5

The following students were recipients of the Curriculum Council's Secondary Education Exhibition and Awards, which highlight outstanding academic achievement.

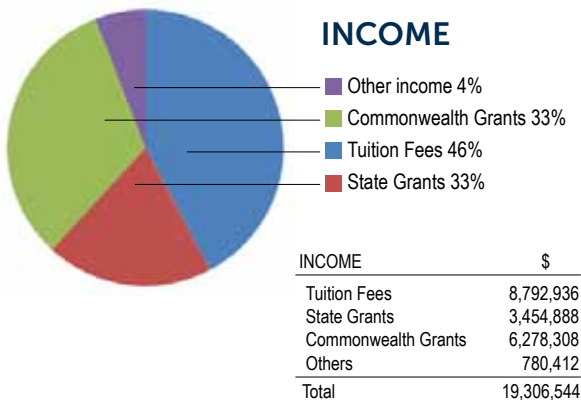
Certificate of Commendation

- *Olivia Bardzovski*
- *Cher An Chee*
- *Oliver Tjeuw*
- *Matthew Tang*

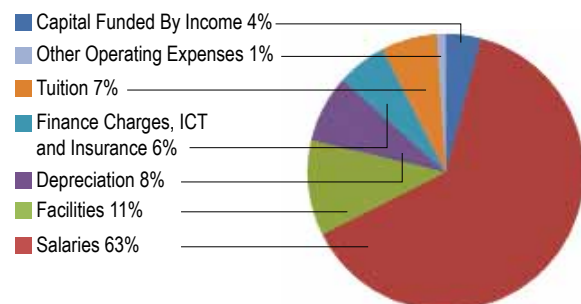
Students completing Vocational Certificates:
3% (6 students).

Students undertaking Vocational training:
2% (4 students).

3. INCOME AND EXPENDITURE



EXPENDITURE



EXPENDITURE	\$
Capital Funded By Income	749,789.00
Salaries	11575697.43
Facilities	2038683.68
Depreciation	1432530.94
Finance charges, ICT and Insurance	1,071,007.61
Tuition	1,193,791.02
Other operating expenses	190,004.23
Total	18,251,503.91



Conclusion

The 2013 school year has been a year of growth, development and progress resulting from the merging process of the two previous Colleges. Much change, both physically and culturally, was introduced very successfully throughout the year.

Overall, 2013 has been an extremely positive year for Kennedy Baptist College. There have been many highlights, which have resulted in our students having access to a wide range of excellent educational activities. College staff, students and parents are to be commended for the cooperative manner in which they helped make 2013 such a successful year.

It has been a delight and privilege to work with a team of people who are committed to a single goal of trying to improve outcomes for students in our new College. We look forward to the challenges of implementing the new WACE courses for Years 11 in 2015. This commitment has been shaped by the shared virtues of learning, excellence, collaboration, care and faith in God.

I would like to take this opportunity to formally thank all community members for their work and support of the initiatives that have been implemented in the past year.

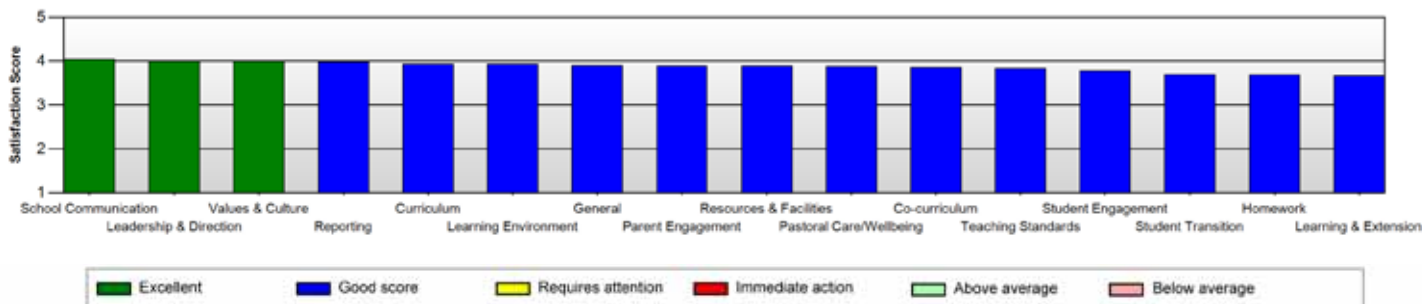
Mark Ashby
Principal

March, 2014

PARENT, STUDENT AND TEACHER SATISFACTION

SUMMARY OF RESPONSES FROM PARENTS

This report section provides a summary of the total responses grouped by key area. Results are ranked from highest to lowest and compared to the average overall score.

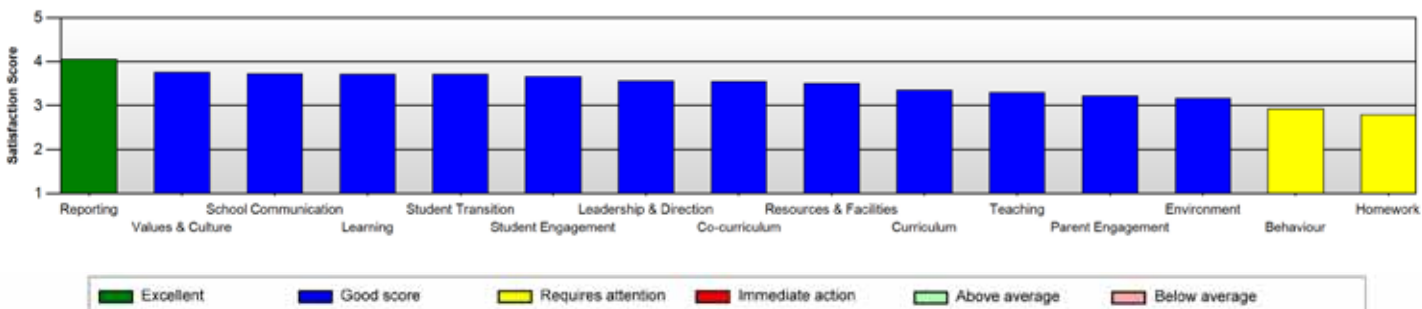


What do you like about Kennedy Baptist College?

- "How welcoming the teachers are to approach. It has obviously given my son confidence and it reflects in his studies."
- "I am happy that my child feels very comfortable and enjoys going to school; I am happy with most of the teachers he has this year; I am pleased that the transition from two schools to one has been of minimal disruption to the children"
- "What I most like about Kennedy is how much my child has improved since public school and the feeling of belonging along with the politeness and consideration from all students from Kennedy."

SUMMARY OF RESPONSES FROM STUDENTS

This report section provides a summary of the total responses grouped by key area. Results are ranked from highest to lowest and compared to the average overall score.

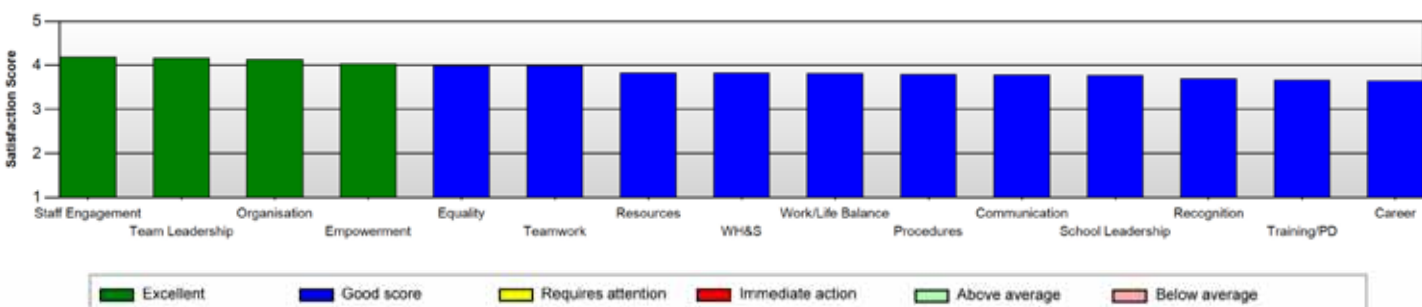


What do you like about Kennedy Baptist College?

- "At the start of the year the school made me feel very welcome. I also made alot of friends"- Year 7 Student.
- "Teachers are a huge part of education, I think that Kennedy's teachers are very respectful and fun to be around. I feel more encouraged to learn and to be more active." - Year 10 Student

SUMMARY OF RESPONSES FROM STAFF

This report section provides a summary of the total responses grouped by key area. Results are ranked from highest to lowest and compared to the average overall score.



What do you like about Kennedy Baptist College?

- "Great vision for the future, strong caring environment, vibrancy, Christian colleagues and students, praying together"
- "I love teaching. I love the relationships I have formed with my students. I enjoy creating a fun and interactive learning environment where students can achieve great things. I love that I can draw on my faith to encourage and mentor students."



Farrington Road, Murdoch, Western Australia 6150 | PO Box 26, Bull Creek, Western Australia 6149 | CRICOS Code: 01688K
t: (+618) 9314 7722 | f: (+618) 9314 7732 | e: admin@kennedy.wa.edu.au | kennedy.wa.edu.au | ABN: 21 207 516794