

## Setting up your IT resources

The following contains links and instructions to set up your device for studying from home.



### Student Digital Citizenship Agreement

Please note: Students and families are reminded of the [Digital Citizenship College Agreement](#), agreed to by all students and parents. Specifically, with the content available through the lessons the agreement includes “*Looking after other people’s websites, acting appropriately when visiting them, not making changes or vandalising them and reporting any damage or abuse that I find.*” See the [Kennedy Handbook](#) for greater details.



### Accessing SEQTA Learn (<https://student.kennedy.wa.edu.au/>)

- Login using your Kennedy email address and password
- Your timetable and all resources for each lesson can be found in SEQTA



### Accessing Embedded Video Recording on SEQTA through Microsoft Stream Videos

To access the online video recordings, please ensure that you are using the latest version of Microsoft Office. Your Kennedy email address allows you to download and use the latest version of Office on your laptop or your personal computer (refer to next page for instructions to download Office 365 and accessing the embedded videos).



### Accessing Kennedy Y and H Drive (<https://webdav.kennedy.wa.edu.au/>)

In a web browser, go to: <https://webdav.kennedy.wa.edu.au/>  
a. Login using: **CURRIC\yourKennedyID** (replace **yourKennedyID** with your actual **username**)  
b. Enter your Kennedy password  
Note: In Y drive, you will only have access to the folder for your Year group.



### Accessing your Kennedy Email (<https://outlook.com/kennedy.wa.edu.au>)

- Login using your Kennedy email address and password.

### Require Remote IT Assistance?

#### Use Kennedy HelpDesk (<https://helpdesk.kennedy.wa.edu.au/>)

- If you need IT assistance when you are at home, raise a helpdesk ticket using the Helpdesk system and someone will get in touch with you.
- Alternatively, you can send an email with details of your issue to [helpdesk@kennedy.wa.edu.au](mailto:helpdesk@kennedy.wa.edu.au).
- Leave a contact phone number in case we need to speak to you.
- Monitor your Kennedy mailbox for any responses from the IT team.

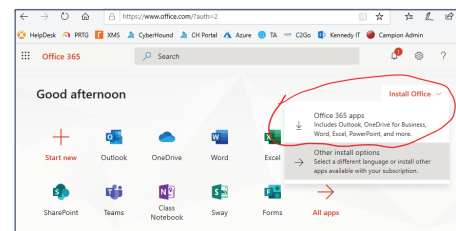


# Accessing Microsoft Stream videos through SEQTA from home

To access the online video recordings, please ensure that you are using the latest version of Microsoft Office. Your Kennedy email address allows you to download and use the latest version of Office on your laptop or your personal computer.

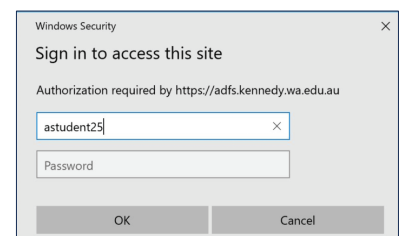
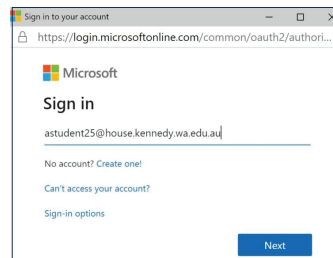
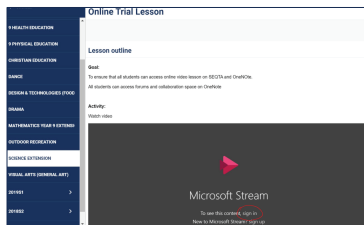
## To install Office 365

- 1) In a web browser, go to: <https://www.office.com>
- 2) Sign in with your Kennedy email address and password.
- 3) At the top right, click on Install Office and select **Office 365 apps**
- 4) Follow the onscreen instructions to download and install Office 365.



## Accessing Microsoft Stream Videos through SEQTA

- 1) Click on sign in option to access lessons with embedded Stream videos created by your teacher.
- 2) In the first login screen, enter your Kennedy email address and click next.
- 3) In the next login screen, enter your Kennedy ID (not your Kennedy email address) and password. Click ok and the video should be displayed.



# Quick links to other Kennedy resources

Please test each of the following links.



- **Kennedy Baptist College Website:**  
<https://www.kennedy.wa.edu.au/>
- **Online Champion MyConnect:**  
<https://kennedy-wa.campion.education/login>
- **Education Perfect:**  
<https://www.educationperfect.com/app/#/login>
- **Research & Study Centre Resources:**  
<http://kennedyrasc.weebly.com/>
- **Infiniti:**  
<https://kennedy.concordinfiniti.com/login>
- **Maths Space:**  
<https://mathspace.co/accounts/login/>
- **Prodigy:**  
<https://sso.prodigygame.com/login>
- **Duolingo:**  
<https://www.duolingo.com>
- **SEQTA Engage (For parents):**  
<https://parent.kennedy.wa.edu.au/>